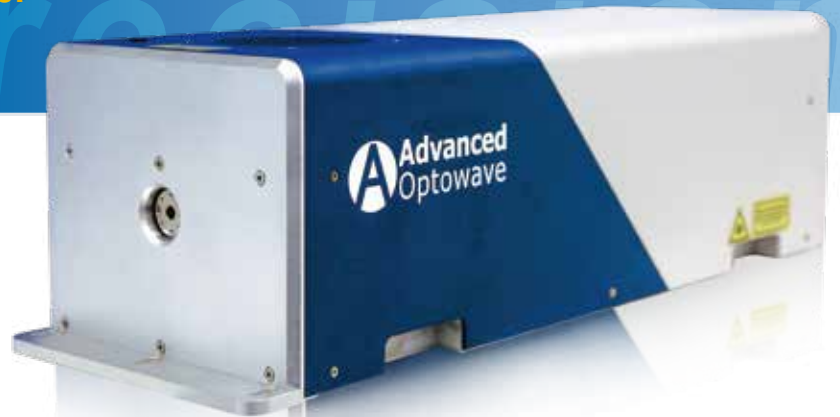


AONano Precision(i) SERIES

Industrial UV nanosecond laser



Features & Benefits:

AONano Precision(i)-355, the intelligent upgrade based on the AONano Precision series, not only perfectly inherits the original excellent performance and stability but also makes the operation smarter and more convenient to use.

Power auto-optimization enables the laser to use intelligent algorithms to achieve one-key intelligent optimization of laser power through intelligent adjustment of crystal temperature and laser inner cavity light path.

The crystal intelligent point-changing, by clicking the "Change point" button, the laser can change the crystal position and realize the laser power recovery.

Real-time power feedback, in the "Power (W)" interface of GUI software, the laser power can be automatically displayed.

Long-term power consistency (power change <2%), making it more widely applied to various industrial processing, and is a perfect combination of high performance, high reliability, and low cost.



FPC/PCB cutting&drilling



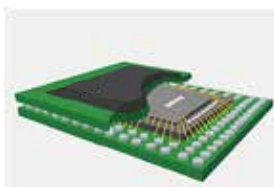
Fly marking



Carbon fiber cutting



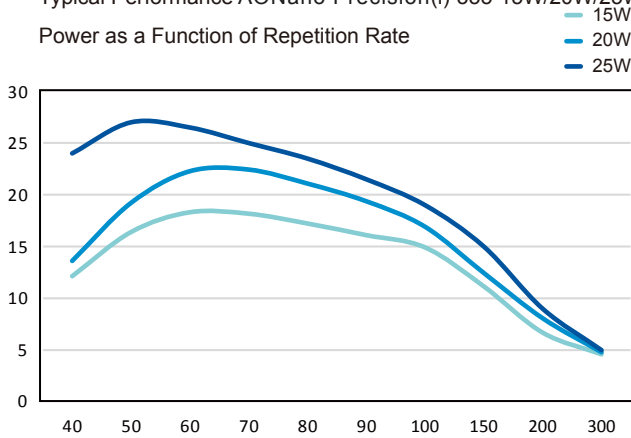
Mobilephone module/SIP cutting



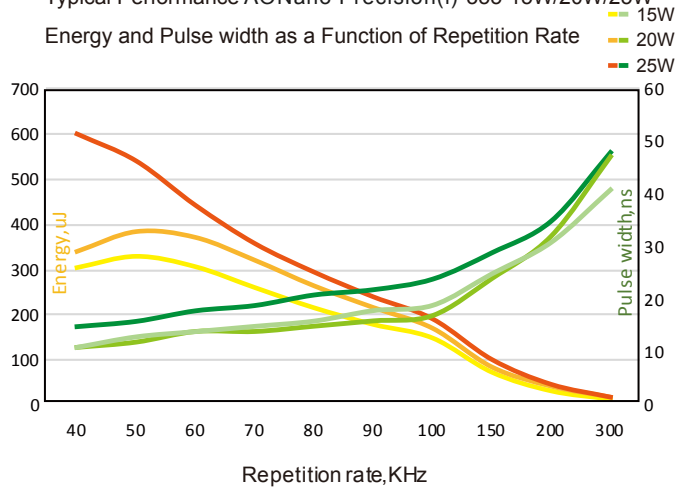
PI cutting



Typical Performance AONano Precision(i)-355-15W/20W/25W
Power as a Function of Repetition Rate



Typical Performance AONano Precision(i)-355-15W/20W/25W
Energy and Pulse width as a Function of Repetition Rate



AONano Precision(i) 355			
Specification	15W - 50K	20W - 60K	25W - 50K
Wavelength (nm)	355		
Average Power (Watts)	>15W@50KHz	>20W@60KHz	>25W@50KHz
Energy (μJ)	>300	>400	>500
Specified Repetition Rate(kHz)	50	60	50
Repetition Rate (kHz)	40~300		
Pulse Width (ns)	<15	<15	<20
Beam Quality (M ²)	<1.2		
Beam Roundness (%)	>90		
Beam Diameter (mm)	~0.55	~0.47	~0.55
Beam Divergence (mRad)	< 2		
Point Stability (μrad/°C)	< 20		
Polarization Ratio	100:1 Linear,Horizontal		
Pulse-to-Pulse Stability (% RMS)	< 3		
Average Power Stability(% over12 hours)	< 3		
Cold Start Warm-Up (mins.)	< 40		
Standby Warm-Up (mins.)	< 10		
Operational Temperature Range (°C)	5-40°C		
Operation Humidity Range (%)	20 to 80,non-condensing		
Storage Temperature Range (°C)	- 20 to 50		
Storage Humidity Range (%)	20 to 80,non-condensing		
Input Voltage (VDC)/Rated Power(W)	24/450	24/600	
Communication	RS232		
Cooling	Water		
Weight (kg)	20		

